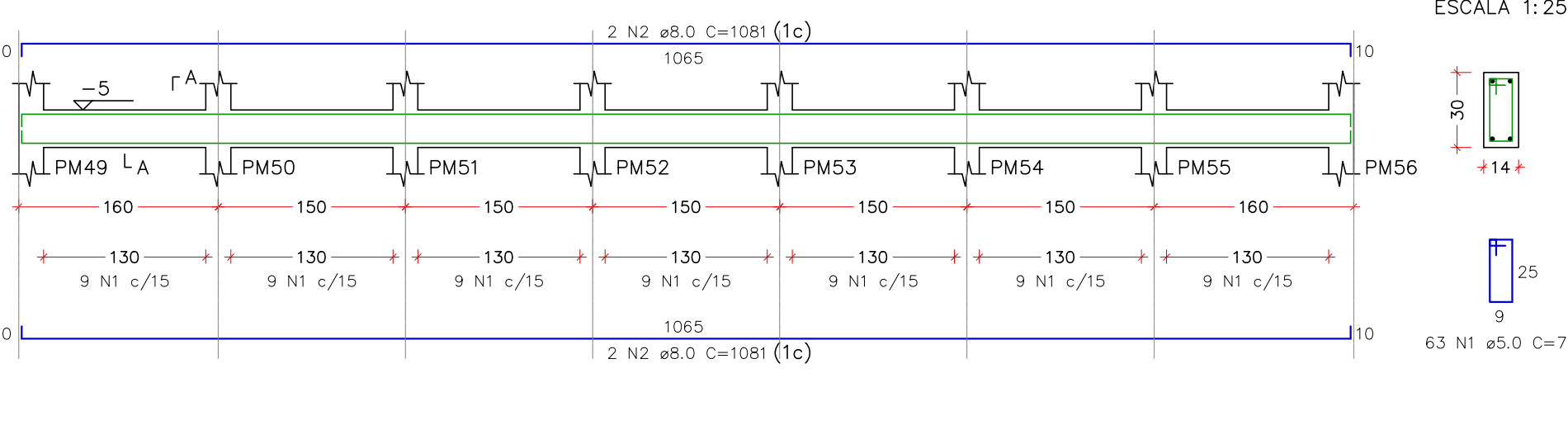
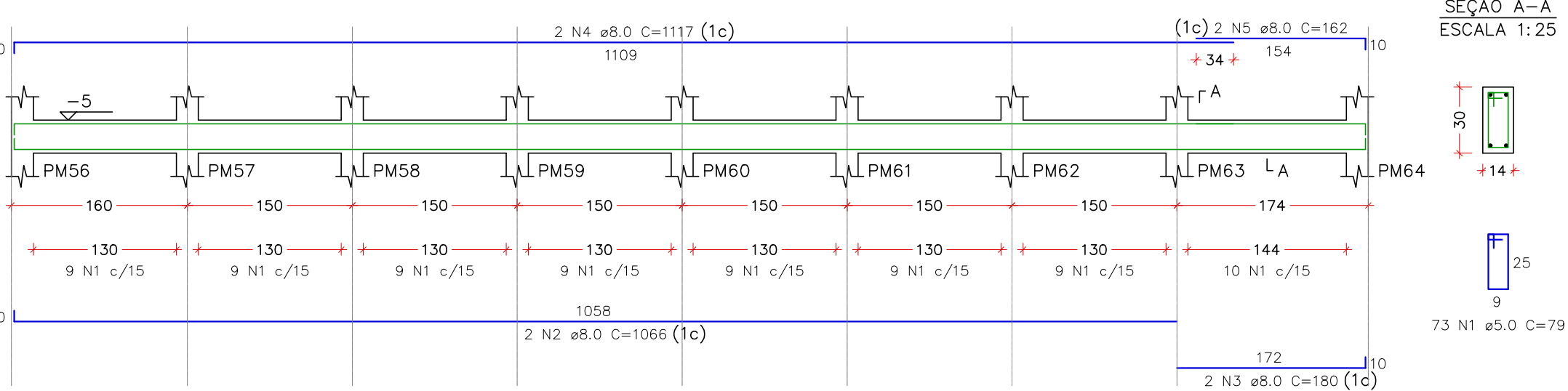


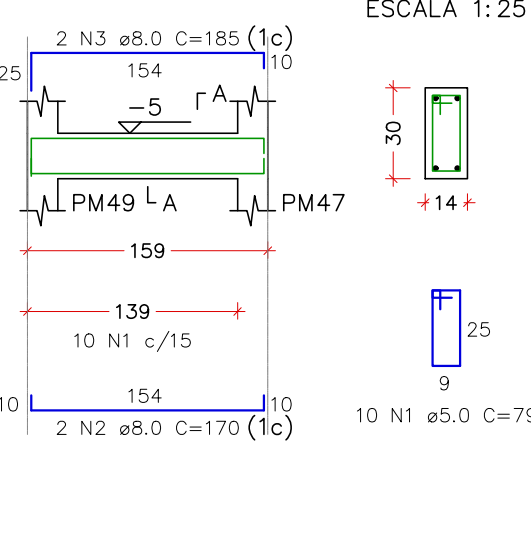
VTM3
ESCALA 1:50



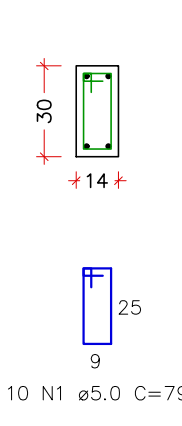
VTM4
ESCALA 1:50



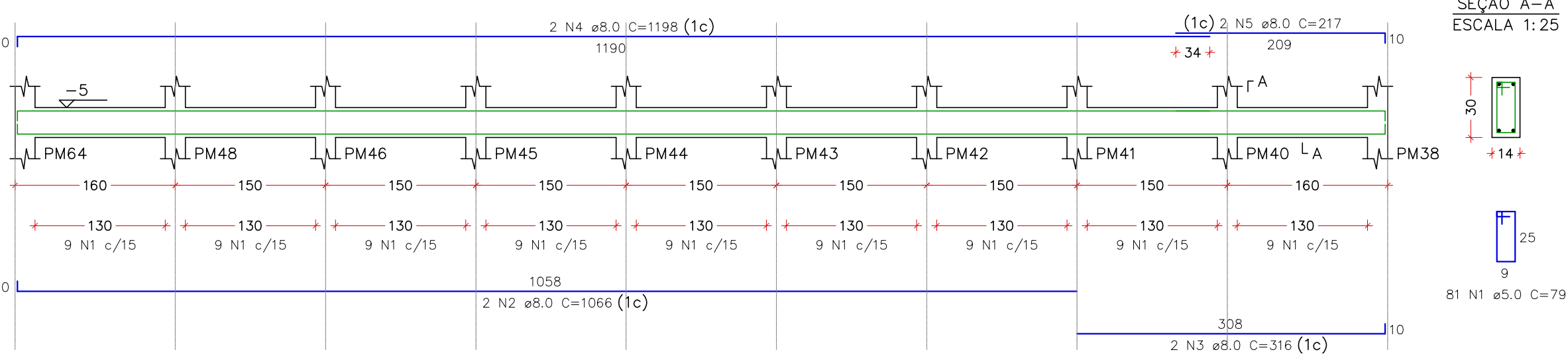
VTM5
ESCALA 1:50



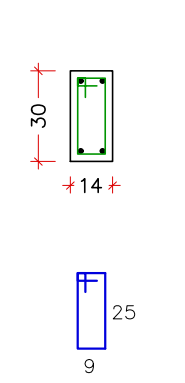
SEÇÃO A-A
ESCALA 1:25



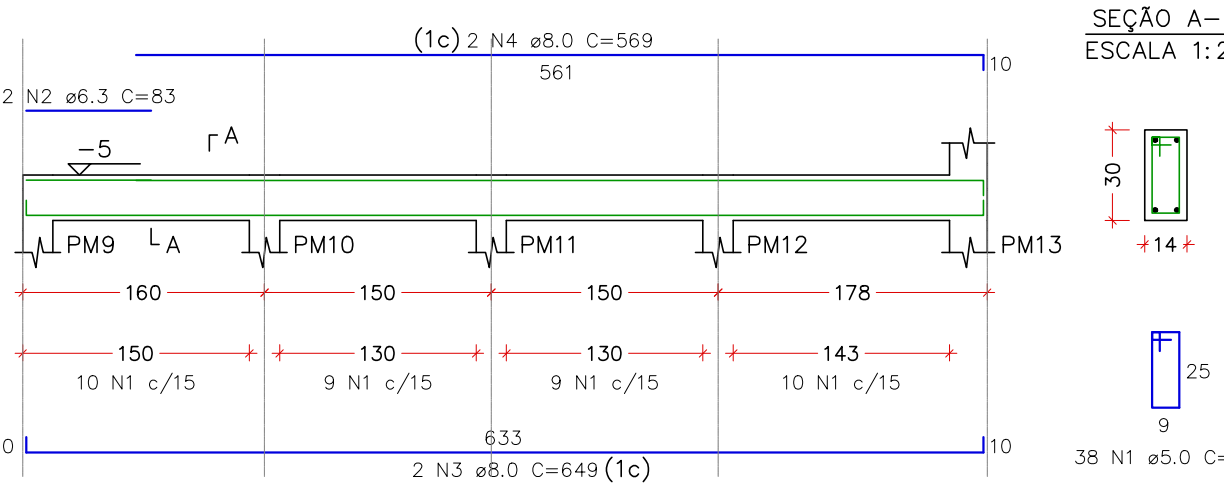
VTM7
ESCALA 1:50



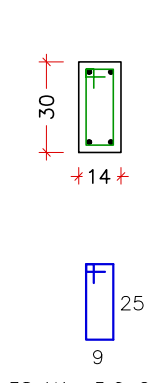
SEÇÃO A-A
ESCALA 1:25



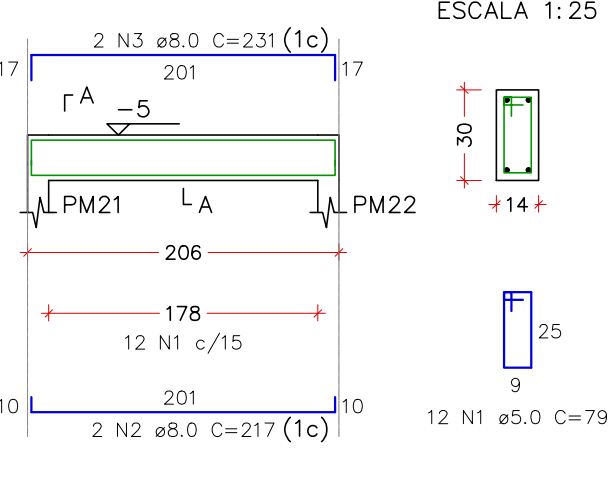
VTM1
ESCALA 1:50



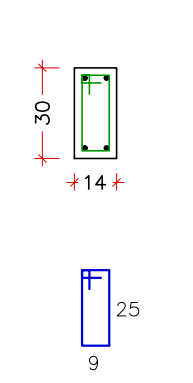
SEÇÃO A-A
ESCALA 1:25



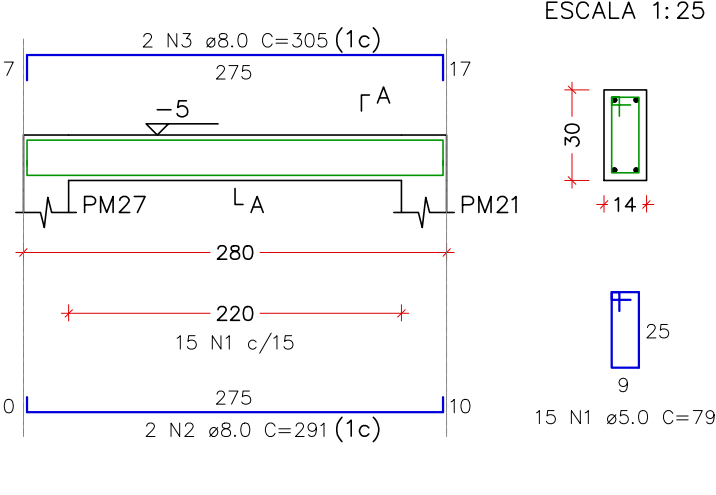
VTM2
ESCALA 1:50



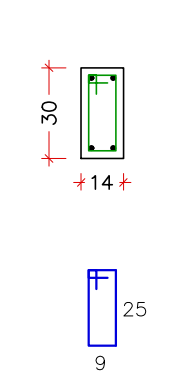
SEÇÃO A-A
ESCALA 1:25



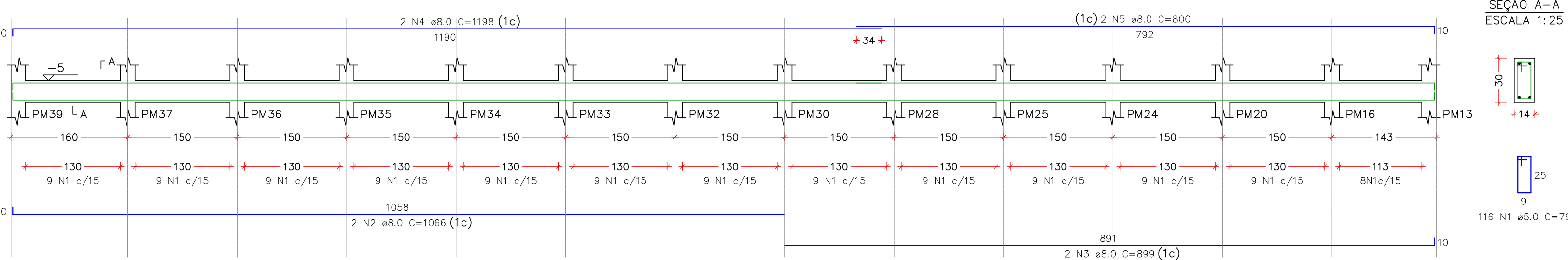
VTM6
ESCALA 1:50



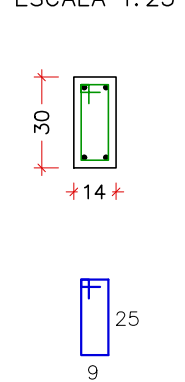
SEÇÃO A-A
ESCALA 1:25



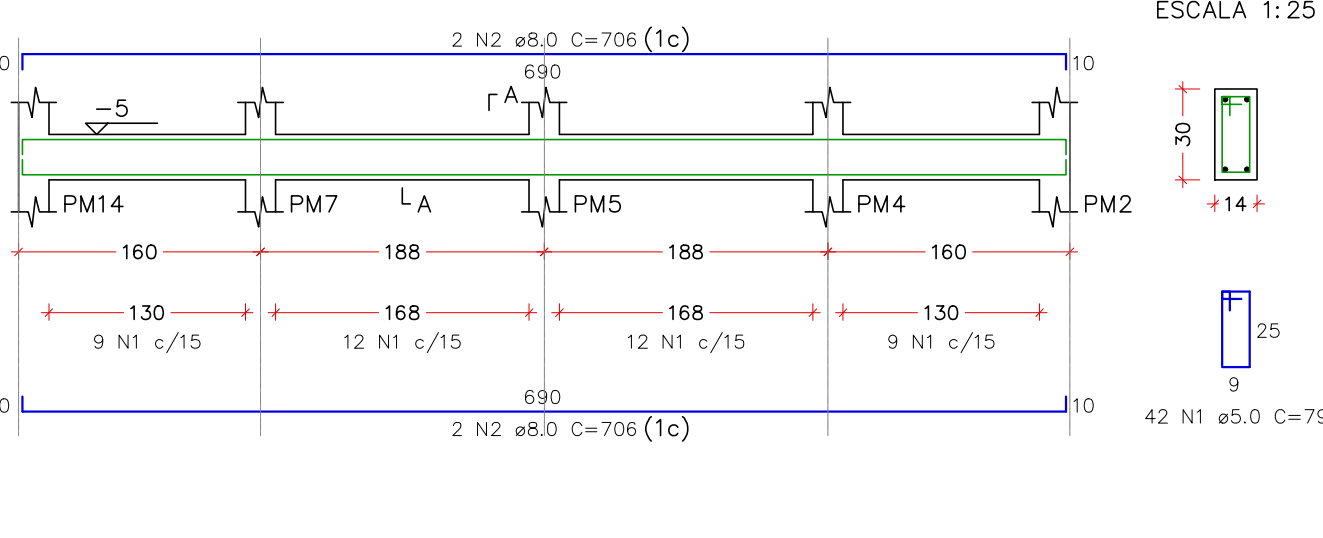
VTM8
ESCALA 1:50



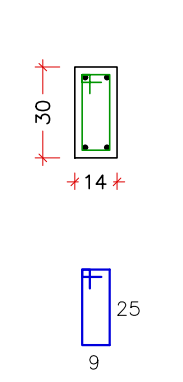
SEÇÃO A-A
ESCALA 1:25



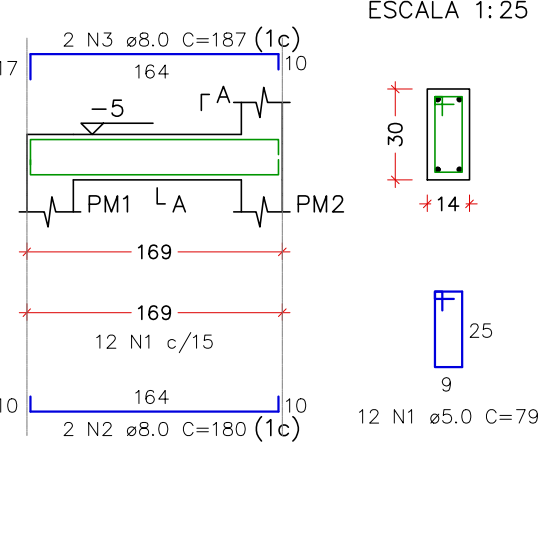
VTM9
ESCALA 1:50



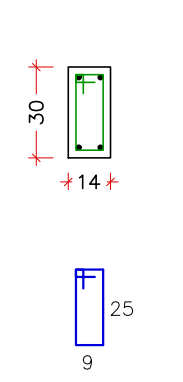
SEÇÃO A-A
ESCALA 1:25



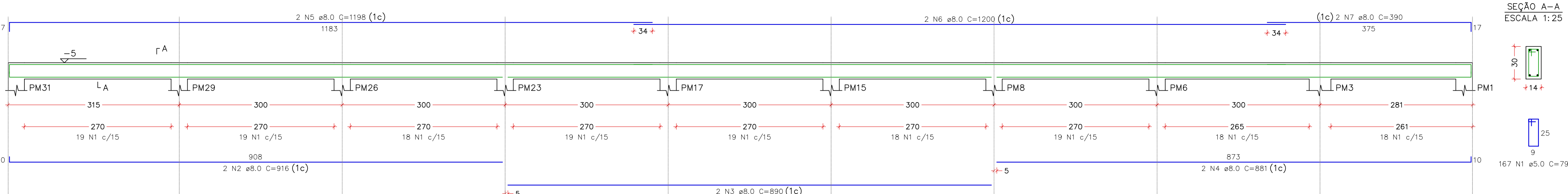
VTM10
ESCALA 1:50



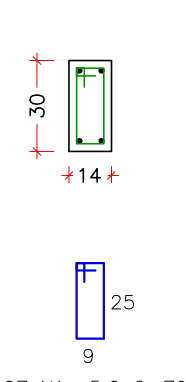
SEÇÃO A-A
ESCALA 1:25



VTM11
ESCALA 1:50



SEÇÃO A-A
ESCALA 1:25



RELAÇÃO DO AÇO

ELEMENTO	AÇO	N	DIAM (mm)	QUANT	C.UNIT (cm)	C.TOTAL (cm)
VTM3	CA60	1	5.0	63	79	4977
VTM4	CA50	2	8.0	1081	4	4324
VTM4	CA60	1	5.0	73	79	5767
VTM4	CA50	2	8.0	2	1066	2132
VTM4	CA50	3	8.0	2	180	360
VTM4	CA50	4	8.0	2	1117	2234
VTM4	CA50	5	8.0	2	162	324
VTM5	CA60	1	5.0	10	79	790
VTM5	CA50	2	8.0	2	170	340
VTM5	CA50	3	8.0	2	185	370
VTM5	CA50	4	8.0	2	81	639
VTM5	CA50	2	8.0	2	1066	2132
VTM5	CA50	3	8.0	2	316	632
VTM5	CA50	4	8.0	2	1168	2366
VTM5	CA50	5	8.0	2	217	434

RESUMO DO AÇO

AÇO	DIAM (mm)	C.TOTAL (m)	PESO + 10% (kg)
CA50	8.0	156.8	68
CA60	5.0	179.3	30.4
PESO TOTAL (kg)			88
CA50			30.4
CA60			30.4

VOLUME DE CONCRETO (C-30) = 1.37 m³
ÁREA DE FORMA = 24.07 m²

RELAÇÃO DO AÇO

ELEMENTO	AÇO	N	DIAM (mm)	QUANT	C.UNIT (cm)	C.TOTAL (cm)
VTM1	CA60	1	5.0	38	79	3002
VTM1	CA50	2	8.0	83	2	166
VTM1	CA50	3	8.0	2	649	1298
VTM1	CA50	4	8.0	2	569	1138
VTM2	CA60	1	5.0	12	79	948
VTM2	CA50	2	8.0	2	217	434
VTM2	CA50	3	8.0	2	231	462
VTM6	CA60	1	5.0	15	79	1195
VTM6	CA50	2	8.0	2	291	582
VTM6	CA50	3	8.0	2	305	610
VTM8	CA60	1	5.0	116	79	9164
VTM8	CA50	2	8.0	2	1066	2132
VTM8	CA50	3	8.0	2	699	1798
VTM8	CA50	4	8.0	2	1198	2396
VTM9	CA50	5	8.0	2	800	1600
VTM9	CA60	1	5.0	42	79	3318
VTM10	CA50	2	8.0	2	706	2824
VTM10	CA60	1	5.0	12	79	948
VTM10	CA50	2	8.0	2	180	360
VTM10	CA50	3	8.0	2	187	374
VTM11	CA60	1	5.0	167	79	13183
VTM11	CA50	2	8.0	2	916	1832
VTM11	CA50	3	8.0	2	890	1780
VTM11	CA50	4	8.0	2	981	1782
VTM11	CA50	5	8.0	2	1198	2396
VTM11	CA50	6	8.0	2	1200	2400
VTM11	CA50	7	8.0	2	390	780

RESUMO DO AÇO

AÇO	DIAM (mm)	C.TOTAL (m)	PESO + 10% (kg)
CA50	8.0	269.6	6.3
CA60	5.0	317.6	53.8
PESO TOTAL (kg)			117.5
CA50			53.8
CA60			53.8

VOLUME DE CONCRETO (C-30) = 2.39 m³
ÁREA DE FORMA = 42.18 m²

REV. 01	13/09/24	ALTERAÇÕES CONFORME SOLICITAÇÕES DA VIGILÂNCIA SANITÁRIA NO PROJ. ARQUITETÔNICO	DAC
REV. 00	01/11/23	EMIÇÃO INICIAL	DAC
REVISÃO	DATA	DESCRIÇÃO	RESP.:
CLIENTE			
		Prefeitura Municipal de Pouso Alegre	
PROJETO	COORDENAÇÃO DE PROJETOS		
		DENIS DE SOUZA SILVA CREA-MG-127.216/D	
Rua Cel. Joaquim Francisco, n.º 341 Bairro Varginha CEP: 37501-052 - Itajubá / MG Tel: (35) 2143-9087 www.docengenharia.com.br		RESPONSÁVEL TÉCNICO	
ALOSIO C. FERREIRA CREA-MG-97.132/D		RESPONSÁVEL TÉCNICO	
RAFAEL B. CARREIRA CAU: 00A155411-5		CAU: 00A155411-5	
EMPREENDIMENTO			
CONSTRUÇÃO DA UBS DO BAIRRO MORUMBI			
ENDEREÇO		DISCIPLINA	
RUA JÚLIO CESAR HUHNN, BAIRRO MORUMBI POUSO ALEGRE - MINAS GERAIS		ESTRUTURAL	
ASSUNTO		FASE DO PROJETO	
PROJETO ESTRUTURAL EM CONCRETO ARMADO VIGAS DO PAVIMENTO TERREO VIGAS DO MURO		EXECUTIVO	
DATA INICIAL		FOLHA Nº.	
01/11/2023		15/22	
ESCALA	REVISÃO	ARQUIVO	
INDICADA	R01	DAC-PMPA-MRB-PE-EST-R01.DWG	